

How to Geotag your Pictures Using Picasa and Google Earth

Put Your Photography On the Map (Literally)



Contents

Put Your Photography on the Map (Literally).....	3
What is Geotagging?	3
Where does the Geotag Data Reside?	3
What tools do you need?.....	3
Step By Step Instructions for Geotagging Photos with Picasa and Google Earth	4

Put Your Photography on the Map (Literally)

Goal: Learn how to Geotags your photos and place them on a map quickly and easily using free software.

What is Geotagging?

Geotagging is the process of adding geographical identification [metadata](#) (*information about a file*) to photos (and other media). This allows applications and web pages to identify and display where an image was taken. You can use [Flickr](#) and other services to place your photos on a map that shows their locations.



Where does the Geotag Data Reside?

The longitude and latitude information is placed inside the [Exif data](#) (*data that identifies date, time, and camera settings, among other things*) of an image.

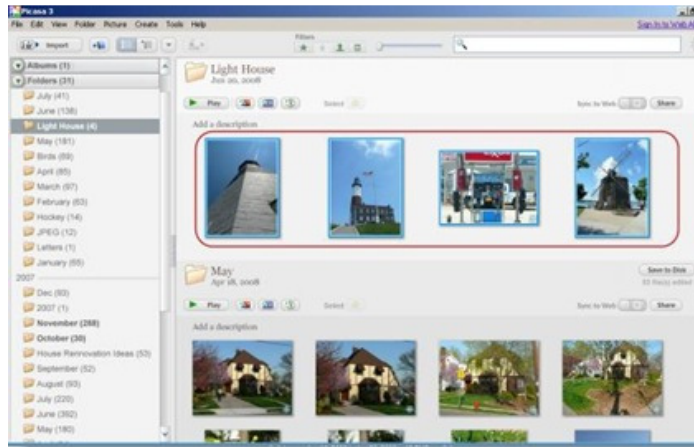
That's great, but how do you find and add the GPS coordinates to the Exif data in an image? It sounds pretty complicated and technical. Well, actually you can do it yourself in just a few simple and fun steps. The best part is, you probably already have and use the software that you'll need.

What tools do you need?

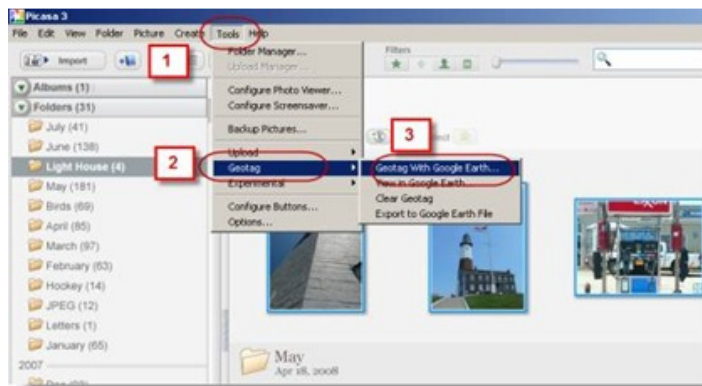
1. Your digital photos
2. [Google's Picasa](#) ([Get Picasa here.](#))
3. [Google Earth](#) ([Get Google Earth here.](#))

Step By Step Instructions for Geotagging Photos with Picasa and Google Earth

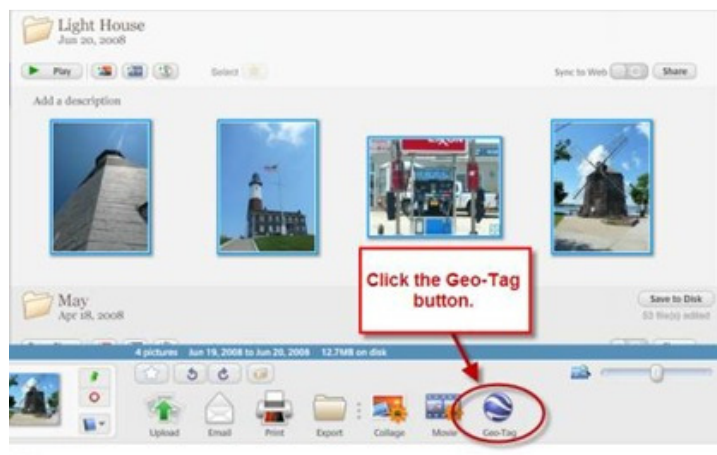
Select the photo(s) to be geotagged in Picasa's Library.



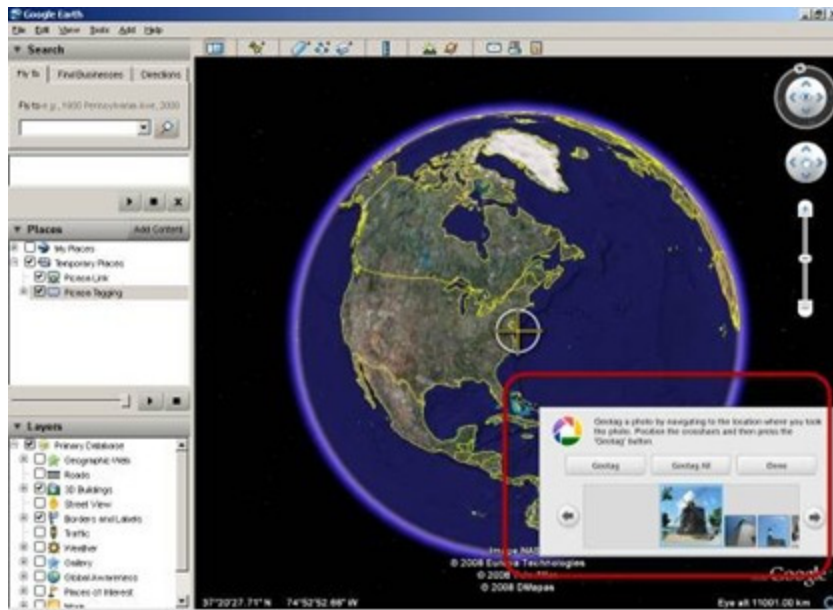
Select Tools > Geotag > Geotag With Google Earth from the Picasa toolbar.



Or, click the button in tGeoTaghe Tray at the bottom of the Picasa Library.



Google Earth opens displaying the **Geotagging** menu (showing your selected photos).



Navigate to the location where the “active” image was taken and click the **Geotag** button.



Move to the next image using the **Left** and **Right Arrow** buttons.

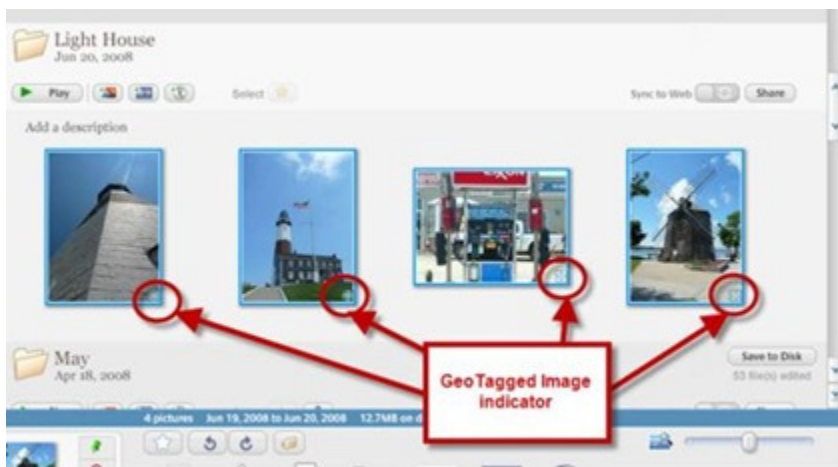


Navigate to the location where the “*active*” next image was taken and click the **Geotag** button.

Note: If all of your images were take at the same location, you can click the **Geotag All** button to do the whole bunch in one shot.

Click the **Done** button when you are done Geotagging all of your images.

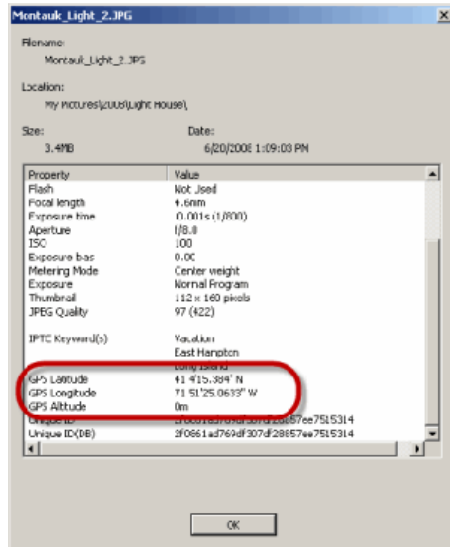
If you return to Picasa you will see a small “*crosshairs*” icon in the bottom right corner of your geotagged images in Picasa’s **Library**.



Viewing Geotags in the Photos Exif Data

Right click on a Geotagged image and select **Properties** from the menu.

The **Properties** menu displays all of the Exif data for your image.



Scroll down the **Properties** menu to see the **GPS Latitude**, **GPS Longitude**, and **GPS Altitude** information.

Click the **OK** button to close the **Properties** menu.

The next time you open **Google Earth**, you will see your geotagged images hovering over the map where they were placed.

